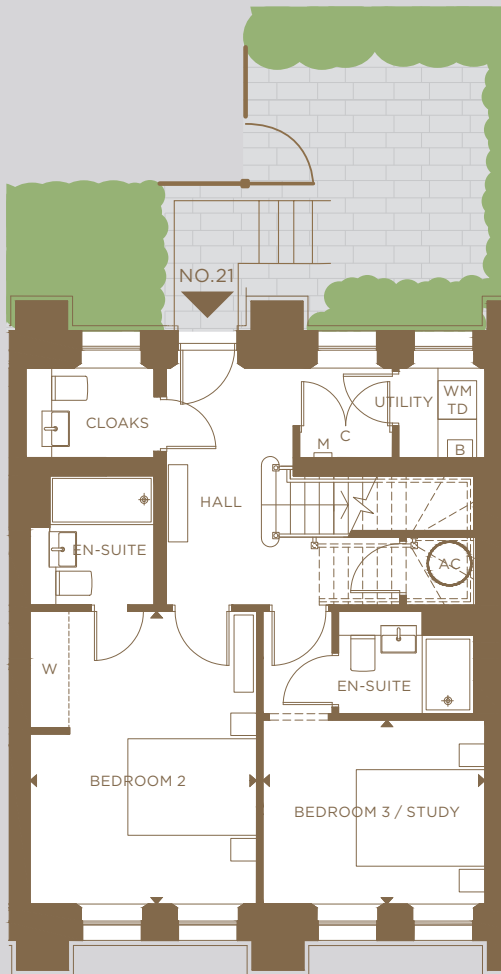




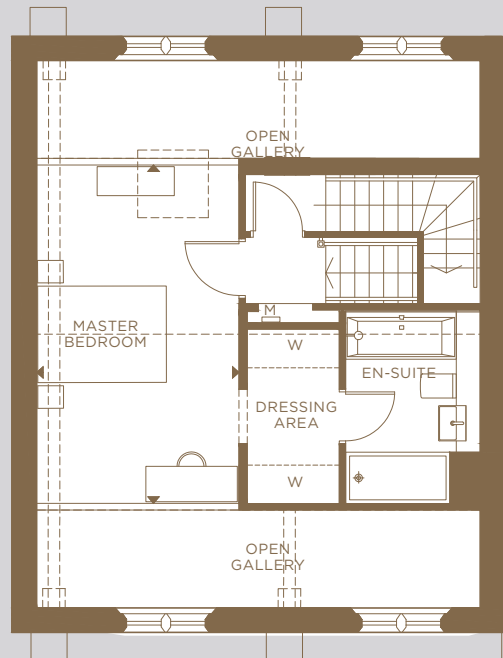
Total Gross Area 161.0m<sup>2</sup> 1733sq ft



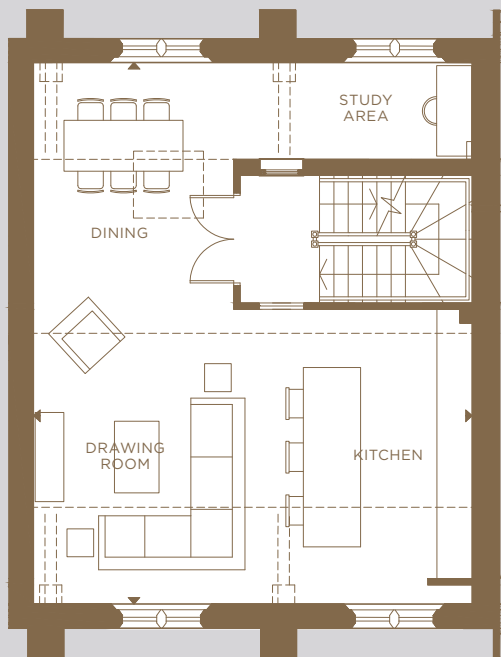
GROUND FLOOR

- KITCHEN/DINING/DRAWING ROOM**  
8.515m x 6.895m 27'11" x 22'7"
- MASTER BEDROOM**  
5.260m x 3.145m 17'3" x 10'3"
- BEDROOM 2**  
4.550m x 3.520m 14'11" x 11'6"
- BEDROOM 3/STUDY**  
3.450m x 2.860m 11'3" x 9'4"
- GALLERY**  
3.755m x 3.680m 12'4" x 12'1"

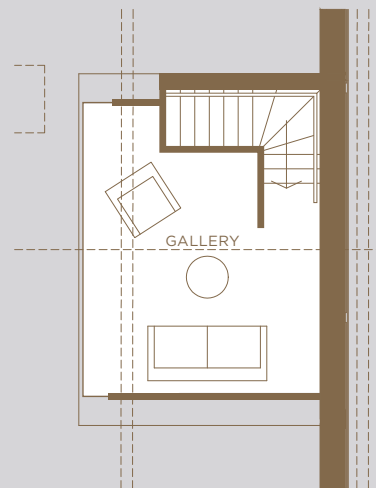
Dimensions are approximate and are measured finish to finish.



SECOND FLOOR



FIRST FLOOR



THIRD FLOOR

House No.21 | 3 Bedrooms

# THE CHAPEL

A four-storey converted house with private terrace, three en-suite bedrooms and a stunning first floor living space overlooked by both the second floor master bedroom suite and the third floor gallery above.

## Beechcroft

Fitzroy Gate Sales and Marketing Suite

RICHMOND ROAD OLD ISLEWORTH TW7 7BP

020 3326 1233 | SALES.FITZROYGATE@BEEHCROFT.CO.UK | FITZROYGATE.CO.UK