

GROUND FLOOR

Total Gross Area  
265.9m<sup>2</sup>  
2862sq ft

KITCHEN/DINING/  
DRAWING ROOM  
14.950m x 8.985m  
49'0" x 29'5"

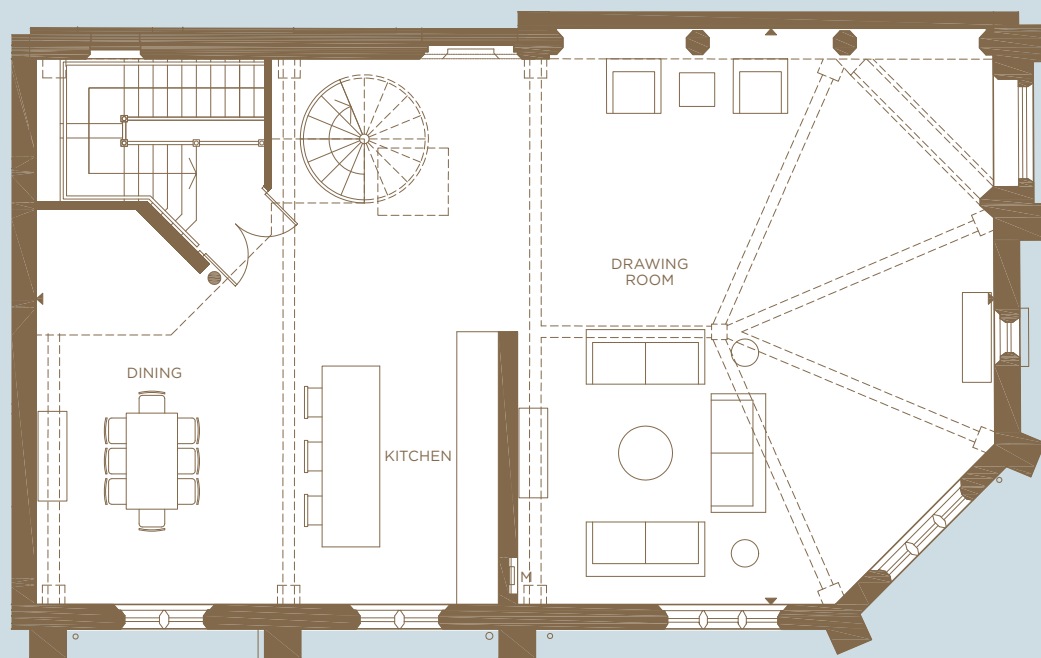
GALLERY/STUDY  
4.265m x 3.615m  
13'11" x 11'10"

MASTER BEDROOM  
6.475m x 4.690m  
21'2" x 15'4"

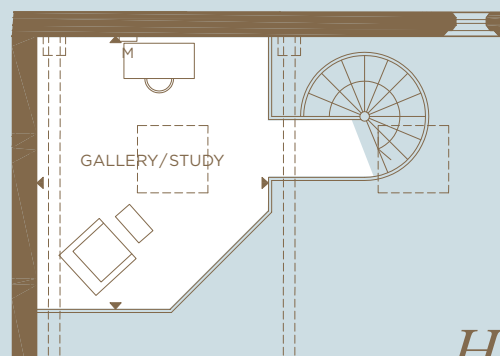
BEDROOM 2  
5.275m x 3.805m  
17'3" x 12'5"

BEDROOM 3  
3.985m x 3.720m  
13'0" x 12'2"

Dimensions are approximate and  
are measured finish to finish.



FIRST FLOOR



SECOND FLOOR

- C CUPBOARD
- W WARDROBE
- ◄► MEASUREMENT POINTS



House No.22 | 3 Bedrooms

# THE CHAPEL

A three-storey house with three en-suite bedrooms and first floor, open-plan living space with a spiral staircase leading to a gallery above. The gallery and living space benefit from views of the stunning stained glass windows.

## Beechcroft

Fitzroy Gate Sales and Marketing Suite

RICHMOND ROAD OLD ISLEWORTH TW7 7BP

020 3326 1233 | SALES.FITZROYGATE@BEEHCROFT.CO.UK | FITZROYGATE.CO.UK