

GROUND FLOOR

Total Gross Area
 235.4m²
 2534sq ft

DINING/DRAWING ROOM

8.035m x 6.920m
 26'4" x 22'8"

KITCHEN/DINING

6.850m x 4.320m
 22'5" x 14'2"

STUDY

3.635m x 1.875m
 11'11" x 6'1"

MASTER BEDROOM

4.365m x 3.970m
 14'3" x 13'0"

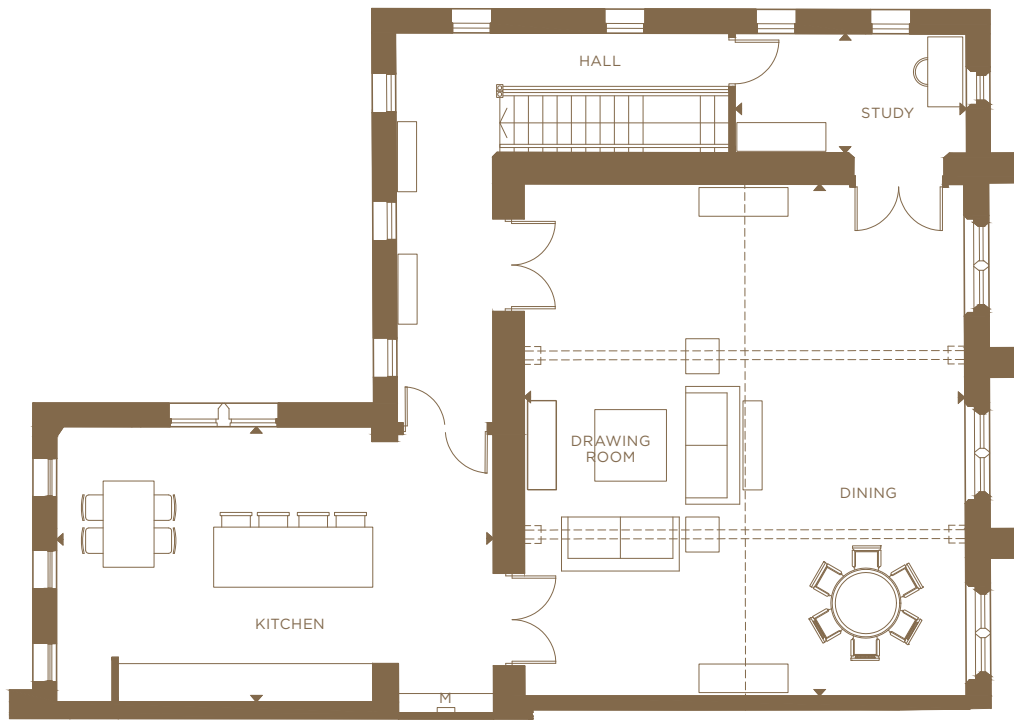
BEDROOM 2

4.580m x 3.005m
 15'0" x 9'10"

BEDROOM 3

3.725m x 2.965m
 12'2" x 9'8"

Dimensions are approximate and are measured finish to finish.



FIRST FLOOR

- C CUPBOARD
- W WARDROBE
- ◄► MEASUREMENT POINTS



No.23 | 3 Bedrooms
THE CHAPEL

A three-bedroom, two-storey converted apartment with three en-suite bedrooms, a dual-aspect kitchen, drawing/dining room, study and a private terrace.

Beechcroft

Fitzroy Gate Sales and Marketing Suite

1 AUGUSTINE CHAPEL HOUSE EGERTON DRIVE OLD ISLEWORTH TW7 7BP
 020 3326 1233 | SALES.FITZROYGATE@BEECHCROFT.CO.UK | FITZROYGATE.CO.UK